



LUCIDTALK NORTHERN IRELAND(NI) "Tracker" Poll-Project: April 2021
 For BBC NI Spotlight. Poll Period: 5th to 7th April 2021. 2,845 responses
 included in final Balanced-Weighted NI Representative sample

POLL QUESTION 9: Do you believe Northern Ireland will be part of the UK...

NI-WIDE RESULTS: TOTAL RESULTS - NI Representative
 (2,845 responses - NI-Wide)

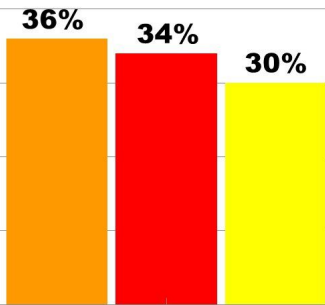


100%

2,845 responses (18+ age-group) - NI-Wide. Audited/Weighted to be NI representative via 17 NI demographic measurements. LT NI Tracker Poll - Poll Period: 5th - 7th April 2021. All data results are accurate to a margin of error of +/-2.3%, at 95% confidence.

CONSTITUTIONAL NEUTRALS ONLY: Only those who have voted for non-unionist and non-nationalist/republican political parties in the three(3) most-recent NI elections

- **YES**
- **NO**
- **Don't Know/Not Sure/No Opinion**



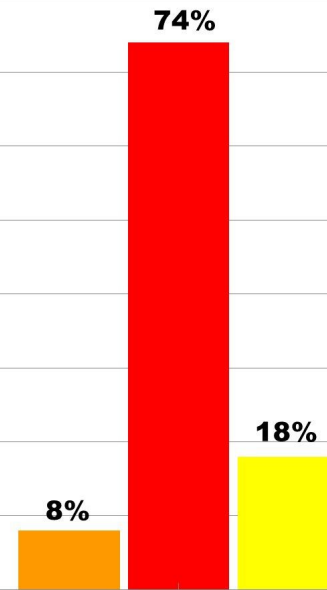
..in 10 YEARS



..in 25 YEARS



..in 50 YEARS



..in 100 YEARS