



ST LOUIS

GRAMMAR SCHOOL

KILKEEL



ST LOUIS GRAMMAR SCHOOL
KILKEEL



CELEBRATING A CENTURY
OF EXCELLENCE IN EDUCATION



St Louis...



**Co-Educational Grammar
School
Academic Excellence
Sporting Distinction
Specialist school in**

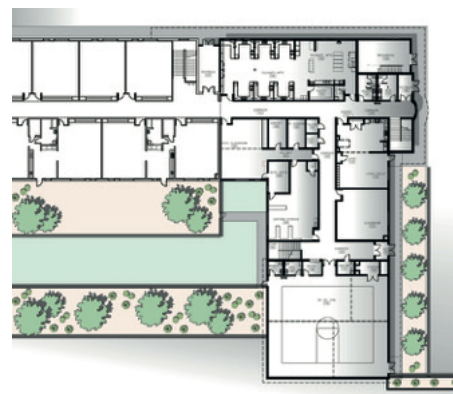
**✓ Computing and Technology ✓
✓ Family Focussed ✓
✓ Small and Caring ✓
✓ Innovative and Creative ✓
STEM specialists**

New School

On the 23 June 2020 the Minister of Education announced 9 schools to advance in design under the major capital works programme; St Louis Grammar School, Kilkeel, was included in that announcement.

The Board of Governors and the Trustees are delighted that the major capital project has reached a significant milestone with Business Case approval for the project having been granted by the Department of Finance on 31 January 2023.

The Department of Education has approved the feasibility study and the consultant team, lead by Hamilton Architects, is developing their concept design proposals in consultation with project stakeholder groups, for a fully DE handbook compliant new build school for an enrolment of 860 pupils on the existing site at Newry Road, Kilkeel. Upcoming work will include a public consultation process and site investigation excavation in advance of a major planning application.



Welcome to St Louis Grammar School.

We hope that you enjoy reading this prospectus and that it gives you a flavour of what life is like in our school.

Dear Parents and Students,

Welcome to St Louis Grammar School. We hope that you enjoy reading this prospectus and that it gives you a flavour of what life is like in our school.

St Louis is an inclusive school for boys and girls, whose aim is to provide opportunities for all students, enabling them to develop their talents and skills so they can realise their full potential, academically, socially and personally.

As a family school, we seek to provide a secure and happy environment for all children regardless of gender or ability. As a Catholic school we promote our ethos in a supportive and caring environment. We welcome children who are being brought up in other religious traditions or none and whose parents support our values. Founded in 1922, we have over 100 years of providing excellence in education in the Mourne area and wider region. Despite our increase in size, many visitors still remark on the warm and caring atmosphere and the excellent relationships between staff and students.

We are committed to providing a high standard of education in all senses of the word for every student. But above all, we strive to create an environment which encourages pupils' physical, moral and spiritual well-being. We are a learning school where the learning experience is relevant, rewarding, empowering and enjoyable, and where everyone is encouraged to reach their academic and personal potential. The school's pastoral policy emphasises self-esteem, respect for one another and the development of good interpersonal relationships as the basis for effective learning. St Louis students enjoy the benefits of a disciplined, happy environment, conducive to study under the guidance of well-qualified teachers and support staff.

We are committed to working in partnership with our parents to ensure that high expectations are met in the form of excellent examination results



St Louis Grammar School Voluntary Grammar Denominational Boys and Girls 11-18

Enrolment September 2024: 100
Approved Admissions Number for 2025: 130

Expected Enrolment September 2025: 715
Approved Enrolment Number for 2025: 770

Chairperson of the Board of Governors: Brendan Cunningham



and high quality extra-curricular experiences. We value parents' support and recognise the importance of their role in the education and development of their children. We provide opportunities for parental involvement through many events, including school Masses, sporting, music and fundraising events. Parents are also actively consulted in the formation and review of school policies.

St Louis is a community where the uniqueness of each individual is recognised and where students are prepared to face the world as confident, articulate and mature young adults with all the necessary skills and attributes required to meet the challenges of the 21st century.

Kevin Martin - Principal



St Louis...

In keeping with the spirit of St Louis the ethos of our school is aligned with that of the founding congregation, which through time has brought its own charism that has helped to create the educational philosophy that informs the running of the school.

As a Catholic Grammar school we, as leaders, teachers, parents and pupils, are asked to reflect on how we live out the St Louis ethos which was Abbé Bautain's vision. Part of our spiritual growth is to reflect on what our roles and responsibilities mean in living out the Gospel message.

The St Louis motto 'Ut Sint Unum' 'that they all may be one' – (John Ch17 v21) calls us to personal wholeness and oneness, to work for peace among neighbours and in the wider community and to support everything that leads to peace in our world.

We understand that parental preference for St Louis Grammar School affirms a commitment to the school's Christian ethos and to the Religious Education programme provided here. An essential part of our education is understanding different religious beliefs and practices, regardless of one's own personal belief. The school welcomes pupils from other traditions and parents are encouraged to see the positive benefits of their children given the opportunity to learn for themselves through RE and Assemblies. Grounded in the St Louis tradition of education, we see religious faith and practice as an integral part of the whole school experience. All pupils study Religious Education throughout their time in St Louis.

The main aim of the Religious Education Programme could not be achieved without considerable emphasis on religious practice during the school year. The Holy Eucharist is central to our faith. At the beginning of the first term the entire school community gathers for a Welcome Service in school, to give thanks and ask for God's blessing on the year ahead. There is also a Welcome Service for Year 8 pupils and their parents in October to celebrate their 'new beginning'. Year group assemblies, a Lenten Penitential service, special liturgical services at Christmas and Easter and retreats, play an important part in faith development. At the end of sixth form, Mass is celebrated for Year 14 students and parents.

St Louis is a caring school, where students are encouraged to live out their faith by supporting a range of charities, local, national and international. Fundraising





takes many forms including ticket sales, sponsored fasts, goal shoots, sponsored walks and bag packs. In the past, groups of students and staff have travelled to Rwanda and Romania to work in orphanages bringing with them substantial funds and resources to aid their development. The school also supports the local branch of St Vincent de Paul by providing hampers at Christmas. We have links within the St Louis Network in Ireland and are developing links with St Louis schools worldwide.

Each year thousands of pounds are donated to a range of charities including Macmillan Cancer Care, Action MS, SERVE, Trocáire Lenten Appeal, the Hospice, and St Louis Mission work in less economically developed countries.



'The governors and the senior leadership team are embracing the expansion of the school and are fully committed to embedding the school's vision, 'Ut sint unum' (that they may be one) through fostering a welcoming, inclusive and cohesive school community. The pupils who met with the inspectors spoke enthusiastically about the school's warm, friendly ethos. They appreciate the supportive and helpful staff and value the range of subjects available to them and the opportunities for participating in cultural and sporting activities. The senior pupils have well-formed career aspirations and speak with maturity and confidence'.

ETI Inspection report 2020



St Louis Grammar School is a Catholic community within which both staff and students work in the pursuit of all aspects of spiritual, educational and personal experience.

To achieve this we have the following aims:

- To help pupils grow in the Catholic faith and foster moral values and attitudes thereby helping them to become mature, tolerant and committed Christians.
- To provide a happy, caring and stimulating learning environment where pupils are helped to:
 - develop self-awareness, confidence, self-esteem and discipline
 - address difficult issues openly and honestly
 - develop a sense of personal and social responsibility
- To provide a broad, balanced, coherent and relevant curriculum, to enable pupils to acquire a wide range of abilities and interests, knowledge, skills and attitudes.
- To establish and develop:
 - a creative partnership between pupils, parents and teachers
 - links with primary schools, other schools, external agencies, past pupils and the wider community.
- To help pupils understand the world they live in, to make informed decisions about their lives and to prepare them for future responsibilities as contributing members of the community, workers and parents.

St Louis Grammar School continues to be a welcoming school for all children, respecting the rights of all children, respecting the rights of individuals to be themselves, share their learning experience and celebrate diversity. The school has become a Rights Respecting school, an accolade awarded this year.

Grammar/Higher Ability Entry

St Louis Grammar operates a grammar/higher ability entry process which enables pupils to access an academic education offering the intellectual rigor required to stretch and challenge higher ability pupils whilst offering the benefits of a learning environment that values the gifts, talents and aspirations of all pupils. Pupils are admitted in the same way that they would be to most Grammar Schools in Northern Ireland, i.e. the first criterion for admission is academic ability based on the SEAG Entrance Assessment Test. The details are explained in the School's Admission Policy and Criteria which is published in January each year by the EA.

A total of 52 students out of 130 are selected on the basis of academic ability or 40% of our annual (Stage 2) intake. Parents who wish their child to be considered for the higher band classes and apply via Stage 1 do not need to apply separately on the online transfer form as all applicants will be placed in the appropriate learning paced class, (78 places).

All Ability Entry

60% of our annual intake are students who have not engaged in the academic selection process. The details are explained in the School's Admission Policy and Criteria. (www.stlouis.org.uk).

The school's Admissions Criteria will be published by the school and the Education Authority (EA)

according to the normal timetable. St Louis remains committed to its own ethos and academic focus on high quality teaching and learning. Those who would normally apply to be admitted to the school are encouraged to continue to do so.



Learning Paced Classrooms

We operate a system of 'learning paced' classes with each class providing a rich, varied and supportive learning environment designed to meet the needs of every pupil. We recognise that pacing the work at the correct level is vital to ensure that all pupils engage with and enjoy learning, experience success, and grow in confidence and self-esteem. We expect all children within our care to achieve their full potential.

We monitor progress and application through both formative and summative assessments so we can adapt to the changing needs and progress of the individual student.





St Louis Grammar School is a community built on a foundation of Christian values of care and respect for the individual.

Pastoral Care permeates all aspects of school life. It is concerned with the personal, spiritual and intellectual development of the whole pupil. It is a positive learning community where pupils feel valued and are encouraged to make a positive contribution to their own development and to the life of the school. Pastoral care is therefore the responsibility of every member of staff and integral to school life. We acknowledge the importance of our pastoral role in the welfare of all young people and through our mission statement and ethos every member of our school community is treated with respect.

The pastoral system has a clearly identifiable structure within the school in which every staff member has a pastoral role. The responsibility for this dedicated focus is carried by the Tutors, Year Heads, and the Senior Leadership Team. This system ensures that there are clear lines of communication and easily identified roles and responsibilities which bring maximum benefit for all pupils.

The pastoral programme followed by the pupils addresses relevant personal, social and academic matters. Through our Pastoral Structures and Counselling Service we offer a supportive environment to pupils. The Personal Development Programme allows pupils to explore key issues within their personal development including Self Concepts, Self Esteem, Health and Well-being, Relationships and Personal Safety. We recognise

that pupils benefit from having a particular teacher to whom they may turn, so pupils are divided into tutor groups of approximately 20-25 pupils. The Tutor plays a pivotal role in helping pupils to integrate into the St Louis community to gain a strong sense of belonging, where high standards of honesty, behaviour and application to work are encouraged and respected. Dialogue between Tutor and pupil is an important part of this process and helps the young person to take responsibility for their own learning.

Relationship and Sexual Education, as a statutory component of the curriculum, is delivered through Personal Development as well as through other relevant subjects. Outside agencies provide support for the programme in all Key Stages. Relevant topics are introduced in tutor period gradually over the seven years and the content is appropriate to the developmental stage of each year group.

We acknowledge that parents are prime educators of their children and that it is only when an actively supportive partnership is developed between home and school that the child's true potential will be realised. Consequently, we aim to maintain full, extensive and creative communication between the school and home.

Year 8

An Open Night for prospective Year 8 children and their parents is arranged each year, usually at the end of Term 1 or the beginning of Term 2. Any parent who is unable to attend the Open Night, and who would like more information about the school, should telephone the school to arrange an appointment.

We understand the emotional and intellectual challenge that the transition from Primary to Grammar school poses for our Year 8 pupils so a comprehensive induction programme is organised to address this. Those whose applications are successful will be invited to St Louis, with their parent(s)/guardian(s) on an afternoon during June when the new pupils will meet with their new friends, pupils currently in Year 8 and their Year Head. The new Year 8s will also be invited into school for a fun taster-day in late August where they will become more familiar with the school layout, meet their year group, do some practical subjects and work with senior pupils in the school. These events commence the induction process before our new Year 8s start the school in September.

The Tutor is usually a parent's first point of contact if there is a concern. The Year Head and tutor will remain with the Year Group as they progress through the school. In order to develop the diverse talents of our students, teaching classes are normally banded in groups where the learning is paced appropriately. Baseline testing which is carried out in advance of September, helps ensure pupils are placed appropriately. We have high expectations of all students and procedures are kept under constant review with the aim of enabling everyone to develop their full potential. We also have developed the use of online learning so pupils and parents can access learning materials and resources.

The school website has a parent's section that gives guidance on how to support students with the demands of new subjects, organise books and personal equipment and to adjust to different types of homework. It also contains subject-specific resources, pastoral resources and guidelines necessary to help your child make a smooth transition from primary school and settle in quickly to their new and exciting environment. We produce a Year 8 handbook which is given to all parents and our SIMS Parent app helps keep everyone up to date on progress.

Parent-Teacher consultations are organised for each year group. During these meetings parents

will have the opportunity to discuss progress and application to work. In addition, parents receive a bi-annual progress report which records grades and/or comments. We value a genuine dialogue with parents which is not restricted to formal meetings but is ongoing and informal. Please allow teachers adequate time to respond to any concerns raised by contacting the school office in the first instance to make an appointment or request a call back.

Child Protection

St. Louis Grammar School is committed to the care, welfare and safety of all its pupils. Our Safeguarding procedures protect our students by ensuring that everyone has clear guidance on the procedures to follow where abuse or neglect is suspected or disclosed. Staff are alert to the possibility of bullying-type behaviours and will take immediate action to stop it and to protect and reassure anyone experiencing or displaying bullying-type behaviour. St Louis operates a Safeguarding policy in line with the Department of Education guidelines. Copies are available on the school website or on request from the school office. The teacher in charge of Safeguarding is Miss King, (Head of Pastoral Care). In her absence Mr Martin, (Principal), Mrs B Cunningham (Head of Junior School), Mr Brown Head (Head of Middle School) and Mr McGlue (Head of Senior School), are the Deputy Child Protection officers who can be contacted.

School Welfare Officer

The school employs a full time school Welfare Officer. The Welfare Officer is available to assess children who have taken ill in school. She may treat minor injuries that have occurred on the school property. She may also administer simple medication, obtaining parental consent where appropriate. There may also be children in school with additional medical needs and who have been assessed and provided with a care plan. The School Welfare Officer will liaise with parents and external agencies in implementing the guidance and procedures of care plans. The Welfare Officer is also involved in promoting health-related policies including Drug Awareness, Relationships and Sexuality Education and our Period Dignity scheme.

Counselling Service

St Louis offers all students access to a counsellor from Familyworks NI. Students may self-refer to the service through our post box system, which is checked weekly, or be referred by a parent/guardian or teacher.



Our Philosophy of Education is based on the view that education must endeavour to develop the whole person. The curriculum and life of the school is therefore imbued with the values of the Gospel so that children may become mature Christian adults.

We recognise that it is not enough to inspire pupils to high ideals unless they are given the opportunity to acquire the knowledge and skills to bring these to fulfilment in the real world.

The curriculum in St Louis Grammar School has been organised to provide a broad, balanced, relevant and coherent experience for each pupil. At the end of Key Stage 3, students will select a pathway which will determine the number of GCSEs they study and for some subjects, the level, for example higher or intermediate.

Key Stage 3

In Year 8, 9 and 10 students study the following subjects:

Art and Design, Computing & ICT, Drama (Y8 & Y9), English, French, Geography, History, Home Economics, Irish, Learning for Life and Work (Citizenship, Employability, Careers, Personal Development), Mathematics, Music, Physical Education & Games, Religious Education, Science, Spanish (Y10), Technology. In Year 10 pupils may also avail of additional taster subjects.

"A range of intervention strategies for improving GCSE English performance have been introduced at key stages 3 and 4, including pupil mentoring and a well co-ordinated evaluation of the pupils' written work across subject departments. Consequently, attainment by the pupils in GCSE English at grades A* to B has been rising steadily over the last four years, and has been above the Northern Ireland average for the last two years".

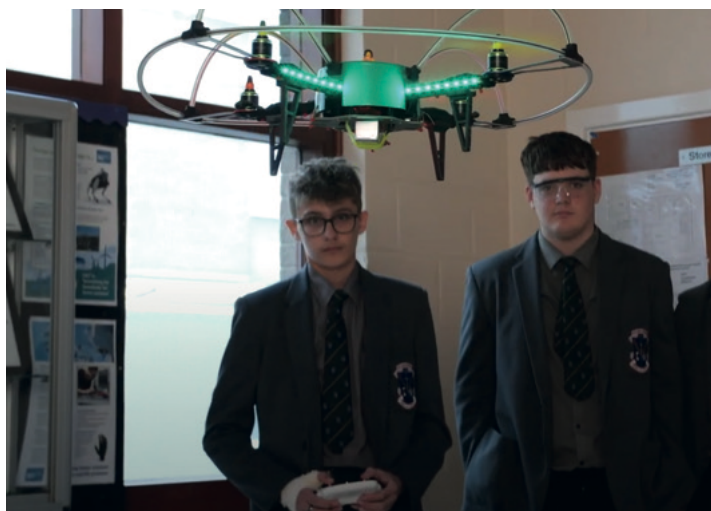
ETI Inspection report March 2017

Key Stage 4

At this stage pupils pursue GCSE or Level 2 Applied Courses.

In Years 11 and 12 students study up to 10 GCSEs including a common core of subjects comprising English, Religious Studies, PE (non exam) and Mathematics. Some students study English Literature and Further Mathematics as an additional option. Students are then enabled to select other GCSE / Level 2 courses from a varied menu of General and Applied GCSEs and equivalents which include:

Art & Design, Applied Business Studies, Bench joinery / Carpentry, Business Studies, CAD / Sheet metal, Child Development, Child Care, Construction, Digital Technologies (Multimedia or Computing strand), Double Award Science, Drama, Engineering, English Literature, Food and Nutrition Science, French, Geography, History, Irish, Motor Vehicle Studies, Moving Image, Music, Applied IT, Learning for Life and Work, Occupational Studies, PE, Single Award Science, Spanish, Specialist Arts and Crafts, Sports Leadership, Technology and Design, Travel and Tourism. All students in Key Stage 4 follow a programme in Citizenship and Employability.



Sixth Form (A Level / BTEC)

The majority of our students continue their academic or vocational studies into the Sixth Form. This is a time of academic rigour, independent learning and preparation for life. It is also a time when leadership qualities are emphasised and developed. Students hold various posts of responsibility within the school and act as role models for younger pupils.

St Louis offers over 30 subjects at both GCSE and at Post-16 level and continues to increase its vocational provision. Part of our strategy to provide additional courses (both academic and vocational) involves working in partnership with the Newry and Mourne Area Learning Community (ALC). Through collaboration with our local schools and the Southern Regional College we offer a wide range of subjects which will cater for the needs and interests of all our pupils.

Area Learning Community

St Louis Grammar School is one of 14 schools active in the Newry and Mourne Area Learning Community.

We are engaged in a shared education partnership with Kileel High School. Through this collaboration we are able to offer additional A Levels.



Sixth Form (A Level / BTEC)

The following subjects are offered at Post-16:

Applied Business Studies, Applied ICT, Art and Design, Biology, Business Studies, Chemistry, Computing, Construction, Design and Technology, Engineering, English Literature, French, Geography, Government and Politics, History, Health and Social Care, Irish, Mathematics, Moving Image Arts, Music, Nutrition and Food Science, Performing Arts, PE Studies, Physics, Psychology, Religion, Sociology, and Spanish.

Each student is expected to take up to 4 of the above subjects in Year 13, and then may proceed to Year 14 with 3 or 4 subjects. Some students may study 3 subjects in Year 13 and we always look for opportunities for alternative ways to gain UCAS points.

All Sixth Form students attend Careers classes each week. In addition, students attend enrichment modules in: First Aid, Horticulture and other Mourne Grange activities, Outdoor Activities, Religious Education, Employability, Presentation Skills, Physical Fitness and Yoga.

Come to St Louis to discover who you are, and let the school help you become who you want to be.

Emma
Head Girl

OPEN DAY
23RD JANUARY 2025

Sports at St Louis is excellent. We get a chance to play other schools in competitions

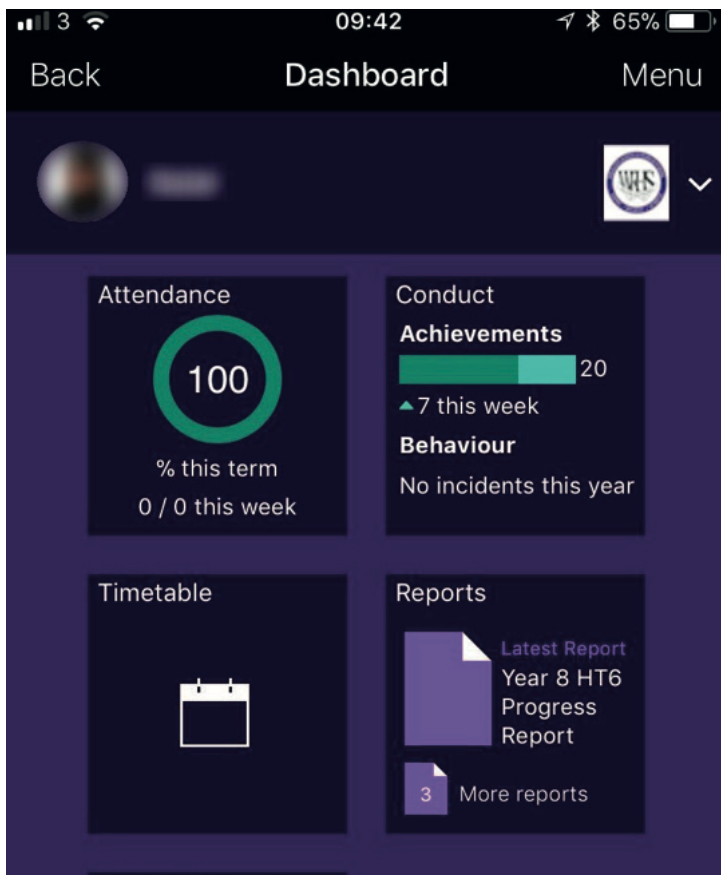
Brian
Year 10

OPEN DAY
23RD JANUARY 2025



St Louis... ..embracing new technologies

St. Louis Grammar School are currently using the SIMS Parent App to keep parents up to date with their child's progress. It is available on Android and iOS devices and can be downloaded today.



To download search:
"SIMS Parent App"
in the Apple Store or Google Play
store. Alternatively scan the QR code
that matches your phone below.



**The teachers here
are really
supportive. They
have helped
prepare me for a
career in
Biomedical science.**
Gráinne
Deputy Head Girl



OPEN DAY

23RD JANUARY 2025



St Louis...

...participation is key







We are confident that there is something for everyone to join in with and enjoy and that participation and social interaction is what really matters.

The primary aim of the PE programme is to offer a wide but balanced range of physical activities which will stimulate enjoyment, create a sense of achievement, increase confidence and foster a positive attitude to exercise, thus promoting a healthy lifestyle for adult life. Our students participate successfully in sporting life, with a very large number taking part in sporting activities outside normal lesson time. There is a wide range of activities on offer including athletics, camogie, cross-country, Gaelic football (boys and girls), golf, netball, soccer, tennis, volleyball and swimming. Internal competitions in some sports are held annually and the school organises and hosts annual primary school competitions in Gaelic football and netball. As well as participating in internal competitions, netball teams play in the Newry and Mourne League at various levels and teams have reached the final or semi-final in all these competitions in recent years. There has also been great success in Gaelic football including MacRory and MacLarnon cup final appearances as well as success in All-Ireland Colleges' competitions. Students past and present continue to achieve tremendous success at local, national and international level in a range of sports including Gaelic football, Camogie, Australian Rules football, golf and rugby.

The school has a long tradition of music and drama. As well as regular musical lessons, students are able to take part in further musical study, where they learn to play a wide variety of musical instruments taught by a team of specialist musicians. Lessons are offered in brass, strings, voice, woodwind, guitar and piano. The senior and junior choir and the traditional group offer further opportunities for pupils to develop their musical talents. Students also perform at assemblies, Masses, concerts and musicals. Year 8 and 9 have weekly drama classes, while GCSE Drama is a popular option. All our shows have been a major success. High levels of success have been achieved by pupils both individually in competitions at local feiseanna and in the annual Schools Irish Drama Festival. Each year a concert of music, drama, song, poetry and fashion is staged to bring together the talents developed throughout the year.

Public Speaking continues to develop throughout the school with students across the Key Stages participating, and succeeding, in various competitions such as BPW, Soroptimists and Environmental Youth Speak. In addition, the junior and senior Debating Clubs continue to flourish with St Louis annually taking part in the Concern Worldwide Debating League.



St Louis...meeting the needs of all pupils

Stretching the more able

Educationally gifted children are encouraged to go beyond the demands of the school curriculum. Specific strategies include:

- Providing extension activities in class and use of blended and e-learning resources
- Encouraging independent research as part of homework and/or projects
- Providing reading materials beyond the confines of the specification
- Encouraging participation in external events such as debating, STEM competitions, public speaking, quizzes and engaging with 3rd level institutions for example, participation in research projects or summer schools
- Choosing specific exam modules to ensure high achievement for the most able
- Enabling students to sit examinations such as GCSEs early
- Promoting Oxbridge entrance
- Promoting Nuffield Bursaries
- Lloyds/QUB and Widening Participation
- Providing CEIAG and Work Experience opportunities both locally and nationally to broaden perspectives and aspirations
- Provide opportunities to work with local business and industry for example Rockwell Collins, Fujitsu

Learning Support Department

Each pupil's progress is closely monitored and additional support is offered to students in Years 8-14 who have particular needs so that they can achieve their full potential. While problems relating to work or study will be dealt with through extra help from the class teacher, it is recognised that some pupils need extra support. The Learning Support Department provides the framework for the whole school to assume responsibility for inclusion matters. In keeping with the Code of Practice for Northern Ireland, the Department ensures that students with additional learning needs make appropriate progress, fulfil their potential and are included as full participants in the academic, pastoral and social life of the school. With effective communication from both the child's previous school and their parents, coupled with appropriate and timely assessments carried out by the school, pupils who need extra support are quickly identified and supported. When a pupil has a statement of special educational needs, this information and the arrangements to address their needs is communicated to all staff with whom the pupil has contact. Some of the programmes and interventions we offer are listed opposite.

Dyslexia/SpLD/Literacy Support:

- Lexia Literacy Programme
- Engage Programme
- Accelerated Reader
- Reading Partnership
- Handwriting Programme
- Use of Read/Write Technology
- Bring your own device to school policy
- Coloured overlay reading rulers
- Coloured exercise books
- Reading pens

Numeracy Support:

- Engage programme
- Maths booster Groups

ASD/ADHD/ADD Support:

- Sensory Motor Group (OT Sessions)
- Social Skills Group
- Sensory space/quiet room
- Time out card
- Movement breaks

'The progress of each pupil is monitored regularly across the subject areas and interventions are put in place, as and when, appropriate'.

ETI Inspection report 2020

Careers

Careers Education, Information, Advice and Guidance plays an increasingly important part in the curriculum as pupils move through the school and decisions become more complex. The main aims of the programme are:

- To raise pupils' self-awareness of how their skills and qualities, interests and ambitions relate to their future education and employment opportunities
- To provide pupils with a range of experiences and opportunities to develop essential employability skills.
- To increase pupils' knowledge and understanding of the working world and raise their awareness of Labour Market Intelligence (LMI) and employment opportunities locally and globally.
- To develop in pupils the Career Planning skills essential for making informed, realistic career decisions linked to their capabilities, interests and aspirations.

The Careers Department works in partnership with outside agencies so as to provide impartial, comprehensive guidance which will help our students make informed career choices and effectively manage key transition decisions at pivotal times in their lives. The Careers Department is committed to promoting links with industry and highlighting the role of Science, Technology, Engineering and Mathematics (STEM) and their potential importance within the Northern Ireland economy. The Student Council is a forum through which the students make a valid contribution towards enhancing their learning environment whilst at St Louis. The aim of the council is to provide the pupils with a forum in which their views can be expressed and acted upon in order to improve the school.



"Meticulous, effective work has been undertaken to develop and further embed careers education across the curriculum, as exemplified by the clear increase in subject-focussed careers lessons and talks and a careers convention involving employers and subject departments. The school is proactive in keeping the pupils abreast of labour market trends and developing strong relationships with local and regional employers".

ETI Inspection report March 2017

We offer a wide range of extra-curricular activities that contribute to a creative and dynamic educational process. Students are encouraged to participate in these activities which complement the statutory curriculum, so that they can broaden their learning experiences and grow and develop into responsible and effective citizens of the 21st century.

- Junior Book Club
- Maths club
- Junior & Senior Choirs
- Mini Enterprise
- Debating & Public Speaking
- Various Ensembles
- Student Council
- Traditional Music Group
- Junior Writer's Club
- Technology Club
- St Louis Network
- Drama
- Film Club

- Cross Country
- Gaelic Football
- Camogie
- Soccer
- Swimming
- Athletics
- Eco schools
- Quiz team
- Fund raising
- SENTINUS Engineering Scheme
- SENTINUS IT R&D
- Ladies Football
- Microbit Explorers
- Lego Club
- French Film Club
- Global Passport Awards
- Cumann Gaelach
- TBUC and SEP
- Quadcopter Challenge

School trips are an important part of the educational experience. Pupils attend language courses in Donegal Gaeltacht, and enjoy trips to France or Spain. We also have a bi-annual soccer trip and a ski trip.



Leavers Destinations

A total of 66 out of 70 students in Year 14 submitted applications for various degree programs via UCAS/CAO, St Mary's University College, and Stranmillis University College. Of these applicants, 86% successfully enrolled in their selected degree courses in September 2024. Additionally, four students secured coveted higher-level apprenticeships, allowing them to earn while gaining higher qualifications and professional experience in quantity surveying and hospitality management. Queen's University and Ulster University have emerged as favoured choices for a total of forty-two students, with one individual beginning a BA in Liberal Arts at St Mary's University College. Nineteen students have secured placements at Queen's University Belfast, selecting degrees that span various fields including Law, Business Management, Accounting, Psychology, Civil Engineering, Biochemistry, Physics, Nursing, Midwifery, Criminology, and Food and Nutrition. Meanwhile, twenty-three students will be attending the University of Ulster, where their chosen degrees encompass Law, Finance, Business, Marketing, Screen Production, Environmental Health, and Quantity Surveying. As in previous years, there has been significant interest in Engineering disciplines, including mechanical, civil, and biomedical engineering. Applicants from St Louis have once again successfully gained admission to the highly competitive Paramedic Science, Nursing, and Allied Health programs, with conditional offers contingent upon outstanding interview performances. Additionally, one student has opted to pursue a foundation year in Art to broaden her experience

prior to selecting a specialist Art degree. Seven students are set to embark on their undergraduate journeys at universities in the city of Liverpool, focusing on disciplines such as Biosciences, International Business, Quantity Surveying, Nutrition, Philosophy, and Ethics. Additionally, one exceptionally talented musician and performer has secured a position at the Liverpool Media Academy (LMA), a higher-level institution specializing in media, music, and performing arts. Graduates have also begun their undergraduate studies in various fields, including Physiotherapy at Cardiff, Occupational Therapy at Swansea, Zoology at Cumbria, Law with Criminology at Northampton, and Biomedical Sciences at the University of Edinburgh. One student will pursue a Level 8 (Honours) degree in Games Design and Production at DKIT. Furthermore, one student is enrolled in a Level 5 HND in Business and E-Business at the SRC Newry campus, whilst another is enhancing his skills through the Open University (OU), broadening his knowledge and experience in mathematics, physics, and computing. Three students are taking a gap year that includes part-time work, part-time study, and travel before applying for university in 2025, while six other students are currently in employment. At St. Louis, we acknowledge the contributions and achievements of every student, honouring the determination, perseverance, resilience, and maturity displayed by our Year 14 leavers. We extend our best wishes to all former students as they transition into higher education, higher apprenticeships, and the world of work.



Leavers Destinations 2022-24

...leavers destinations 2024

Degree Course	Destination
MSc Advanced Accounting BENG Hons Civil Engineering BSc Hons Biochemistry BSc Hons Biomedical Science BSc Hons Business Management with a placement year BSc Hons Professional Nursing (Children's and Young People) BSc Hons Mathematics LLB Hons Law LLB Hons Law with Politics BSc Hons Physics BSc Hons Food Science and Nutrition BMus Hons Music BSc Hons Criminology and Sociology BSc Hons Psychology	Queen's University Belfast
BA Hons Art and Design Foundation Year BSc Hons Accounting Pathways BEng Hons Biomedical Engineering BSc Hons Business Economics BSc Hons Business Studies BSc Hons Computer Science BEng Hons Mechanical Engineering BEng Hons Civil Engineering BSc Hons Adult Nursing BA Hons Communication and Counselling Studies BSc Hons Environmental Health with Professional Practice BSc Hons Finance and Investment Management BSc Hons Language and Linguistics BA Hons Screen Production LLB Hons Law LLB Hons Law with Politics and International Studies BSc Hons Paramedic Science BA Hons Marketing BEng Hons Technology with Design BSc Hons Sport and Exercise Science with a placement year BSc Hons Quantity Surveying and Commercial Management	Ulster University
Higher Level Apprenticeship in Quantity Surveying with Graham Group Higher Level Apprenticeship in Quantity Surveying with Felix O' Hare Higher Level Apprenticeship in Quantity Surveying with PURE Engineering Higher Level Apprenticeship in Hospitality and Tourism with Kilmorey Arms Hotel HND Business and e-commerce	Southern Regional College
BMus Hons Musical Theatre	Liverpool LMA
BSc Hons Biomedical Science BSc Hons Business and International Management BSc Hons Nutrition BSc Hons Quantity Surveying	Liverpool John Moores University
BA Philosophy, Ethics and Religion	University of Liverpool
BSc Hons Counselling and Physiotherapy	Cardiff University
BSc Honours Zoology	University of Cumbria
BSc Hons Biomedical Sciences	University of Edinburgh
LLB Hons Law and Criminology	Northampton University



GCSE Results 2024

Subject	% A*-C
Art & Design	100%
Applied IT	100%
Business Studies	81%
Applied Business	90%
Child Development	85%
Construction	81%
Digital Technology	97%
Design Technology	53%
Double Award Science	84%
Drama	100%
Engineering	100%
English Language	77%
English Literature	96%
Food and Nutrition	86%
French	100%
Further Maths	100%
Geography	63%
History	82%
Irish	100%
Learning for Life and Work	70%
Mathematics	76%
Motor Vehicle Studies	57%
Moving Image Arts	100%
Music	100%
Occupational Studies	96%
Prince's Trust	100%
Religious Studies	68%
Applied RE	100%
Single Award Science	79%
Applied Science	100%
Spanish	100%
Sports / PE Studies	73%
Travel and Tourism	100%

GCE A Level and Post-16 Results 2024

Subject	%A*-C
Accounting	25%
Art	50%
Biology	86%
Applied Business	100%
Business Studies	85%
Chemistry	50%
Computer Science	100%
Construction	100%
Design and Technology	77%
English Literature	100%
Engineering	100%
French	100%
Geography	67%
Health and Social Care	100%
History	100%
Applied ICT	100%
Irish	100%
Mathematics	92%
Moving Image*	100%
Music	80%
Nutrition and Food	100%
Performing Arts *	33%
Physics	67%
Politics	100%
RE	79%
Sociology	100%
Sports Studies	100%

* Taught fully in KHS as part of the Shared Education Partnership

Student Council

The St Louis School Council is designed so that all students are effectively members of the Council. It has a three-tier structure in that all students initially meet at tutor group level before forwarding their ideas to a Year Group Council. During the Year Group phase students will establish items to be included on the agenda for the full School Council meeting of which there are four scheduled throughout the academic year. Two representatives, on a rotational basis, will attend the full School Council meeting to represent the views of their peers. The full School Council meetings are convened

in the school library during which the Principal and/or Vice Principal are present. Members are encouraged to put forward their ideas to other members of the Council with the confidence that they have a forum in which their views are both respected and valued. The School Council is designed to enhance communication in two directions. As such, council members must create an analysis of the nature of debates and relay key points back to the student body via assemblies. Members have been involved in a variety of activities working in partnership with the Senior Leadership and Management Team and outside agencies. They perform an essential role of being the 'Student Voice' feedback on teaching and learning experiences, developing school policy and other initiatives.

Shared Education

St Louis Grammar School, Kilkeel is the only school to have been awarded Specialist Status in Technology and Computing in N. Ireland. Since 2009, Shared Education continues to be a very successful feature of the Specialist Status initiative and the school works closely with Kilkeel High School to offer joint subjects at A Level as part of the "Kilkeel: A Shared Town Through Education" project. This project enables pupils to experience Shared Education through the study of Engineering, Moving Image Arts, and other subjects.





The School Day

Junior School

9am	Registration
9.10	Period 1
9.55	Period 2
10.40	Break and Assemblies
11.00	Period 3
11.45	Period 4
12.30	lunch
1.05pm	Period 6
1.50	period 7
2.35	period 8
3.20	school finishes

Senior School

9am	Registration
9.10	Period 1
9.55	Period 2
10.40	Break and Assemblies
11.00	Period 3
11.45	Period 4
12.30	period 5
1.15pm	lunch
1.50	period 7
2.35	period 8
3.20	school finishes

Bells will ring at 10.50 for mid break
1.05 for end of first lunch and 1.15 pm
for beginning of second lunch.

School Meals

The school currently offers a cafeteria service where pupils select items on a self-service basis. Breakfast is available in the morning and snacks are available at break time and lunch time. As health-promoting school, we encourage pupils to follow a healthy diet.

We continue to promote healthy eating in school through the implementation of initiatives and schemes to promote healthy eating for pupils.

Attendance

Attendance is a vital factor in academic achievement. The school places great importance on attendance and punctuality. It is the legal responsibility of parents to ensure their children's attendance is as high as possible and that they arrive on time, before 9.00am. If a student is ill a parent should phone the school on the first day of absence and a letter explaining the student's absence must be given to the student's form tutor on the first day of return to school. Students who become ill during the school

day will be sent to the school welfare officer. If it is necessary for a student to go home, the school will make direct contact with the parent/guardian to make the necessary arrangements. The welfare officer will also inform the Year Head. No student may go home without following this procedure and without obtaining permission from a relevant member of staff. Medical appointments should be arranged outside school hours when it is possible to do so. Family holidays should not be taken during school time. These absences place students at an educational disadvantage. Given the requirements of the Northern Ireland Curriculum, time may not permit the teacher to cover the missed classwork in detail.

Positive Behaviour

St Louis provides an environment in which personal and academic development is encouraged and rewarded.

The school expects that all pupils show high standards of behaviour at all times and recognises four operating principles upon which the code is based:

- It is expected that pupils act with courtesy, consideration and respect towards one another.
- Pupils must co-operate fully to enable effective teaching and learning to take place.
- Pupils must behave in a manner so as to ensure the safety of people and property at school.
- Pupils must be mindful of their image and appearance and that of the school and its environment.

Most breaches of discipline are dealt with by referral within the Pastoral System. When a serious breach of discipline occurs, parents will automatically be contacted and the appropriate sanction will be put in place. In very serious instances the School reserves the right to exclude pupils. Concerns about a pupil's safety should be reported to the Designated Child Protection Teacher. We are extremely proud of our students who are caring, thoughtful, kind and take seriously their role as ambassadors for the school. On admission, each pupil is given a copy of the Positive Behaviour Policy in the Student Planner.

Nurture Provision

As a school we seek to embed nurturing approaches and ethos in all our classes. To develop this approach, we have built a nurture hub to promote the key principles of attachment, resilience and trauma informed practice for our

pupils and provide a safe space to enable children who attend school in challenging circumstances to continue to have more consistency and stability in their school environment .

Homework

Regular homework is a valuable aspect of the learning process. It reinforces and extends classroom learning encouraging pupils to think, work and learn independently. The duration and frequency of the homework set will vary according to the year group and frequency of class. The precise amount of time spent on homework is much less important than the quality of tasks set and the way they are planned to support learning. In the first year homework should take forty minutes to one hour each night. This increases to one and a half hours per night in the third year and two to three hours in the senior school. Parents are asked to contact the school if the amount of homework set appears to be either too much or too little for the student concerned. Students carry a homework planner for the recording of homework. Two-way communication between teachers and parents using the Student Planner is encouraged and parents are expected to sign the planner each week. A homework policy is in operation which sets out clearly the roles of students, staff and parents with regard to homework. Copies are available on request.

School Uniform

St Louis students wear their uniform with pride. The uniform helps pupils identify with the school and assists in creating a sense of community. It is the responsibility of parents/guardians to provide the uniform as required. Accepting a place at the school implies support for the school's policy on uniform. The importance of pupils presenting themselves well cannot be over emphasised. It is compulsory for students to wear the school uniform at all times during school hours, travelling to and from school, during examinations and when representing the school including official school functions. Parents will appreciate that the general public make judgements about a school on the basis of how the pupils look and behave while wearing the school uniform. Please note the Education Authority operate a scheme for the assistance of parents whose circumstances make it difficult to provide the uniform prescribed by the school for their children.

The History of St Louis

As a Catholic Grammar School we have as our patron St Louis IX, King of France, known also

as the "Most Christian King". He was born to wealth and power in 1214. When he was only 12 his father, King Louis VIII died, and Louis IX was crowned King. At that time, his mother Queen Blanche of Castile, was declared regent and remained an important influence in his life.

Yet, despite his wealth and affluence, St Louis led an exemplary life, spending long hours in prayer, fasting and penance. Louis was a great lover of justice and he was renowned for his charity. He was very generous to the poor and underprivileged, and regularly brought the poor to his palace where he served them himself. "The peace and blessings of the realm come to us through the poor," he would say.

St Louis is often described as "one of the greatest of all French Kings" and was considered by his family, friends, French nobles, and religious men and women to be a deeply pious and honourable man. He took a special interest in charitable institutions, regarding his kingly duties as part of his Christian vocation. St Louis died near Tunis, 25 August 1270. His canonisation to the sainthood was proclaimed in 1297 by Pope Boniface VIII.

In 1842 the Congregation of the Sisters of St Louis was founded in France by Abbé Louis Bautain. He was a philosopher, teacher and Priest. His great concern was to provide a Christian education for the young, and for this purpose he founded a society of priests, and later a society of sisters, all of whom became involved in some aspect of education. Bautain's vision was of 'a world healed and transformed by the saving wisdom of Christianity'. His constant theme was unity and the search for truth, and his guiding words were of the prayer of Jesus to his Father: 'that they all may be one' - the St Louis motto 'Ut Sint Unum'. The first St Louis Sisters came to Ireland in 1859 and set up a school in Monaghan town. Other schools were opened in Middletown (1875), Carrickmacross (1888), Kilkeel (1921) and Ballymena (1924). The St Louis sisters also set up schools in Belfast, Dundalk and Dublin.



Now in 2023, the Sisters of St Louis are in the process of transferring ownership and trusteeship of St Louis schools in the North of Ireland to the St MacNissi's Educational Trust of the Down and



Connor Diocese. With fewer Sisters involved in educational leadership and the Irish Region of the Sisters of St Louis direct role in education in decline, now is the right time to make this change.

The Sisters of St Louis are committed to Catholic education and are proud of their contribution to the education mission of the Church in Kilkeel, Ballymena and throughout Ireland over the past 160 years. The St MacNissi's Educational Trust was established in 2004 to bring together into a single body, the trusteeship of the many Catholic schools established by and associated with the parishes and Diocese of Down and Connor, (currently 160 schools.) Its purpose is to hold in trust these schools for the Catholic community and to preserve and develop the family of Catholic schools within the Diocese, at the service of the local community and wider society. The transfer in trusteeship does not have any impact on the education provided by St Louis Grammar School, Kilkeel, nor will it have any bearing on the day to day running of the school.

Access to Documents & Information

Copies of relevant documents, policies and other information, which may be inspected or obtained by parents or other members of the public, will be available from the school on request, in accordance with the Education (School Information and Prospectuses) Regulations (Northern Ireland) 2003 and also the Freedom of Information Act



(2000). (Please note that a fee will be levied for photocopying and postage). Appointments to talk to one of the Senior Teachers, Vice-principal or Principal can be made through the Main Office.

Charging and Remission Policy

The School's policy on Charging and Remission is in accordance with Article 131 of The Education Reform (Northern Ireland) Order 1989 and Regulations as subsequently made by DENI. There are no tuition or capitation fees. However, parents are asked to contribute towards the educational needs of the students which cannot be met out of Department of Education funding through a Voluntary Contribution of £60.00 per child or a Maximum £150 per family. The policy of St Louis Grammar School is to keep the cost of optional extra activities to a minimum.

Admissions Policy

For admission into Year 8 2024/25, St Louis Grammar School will operate a 3 stage application process. A full copy of our admissions policy is available online and from the EA 'A Guide for Parents'.

The information in this prospectus is correct at time of publication but may be subject to change.



...a foundation for the future



"Give the young all your care and affection, and try to touch their hearts by the interest you show in them. Keep them, as it were under the shadow of your wing, but never push or constrain them morally."
Abbé Louis Bautain.



ST LOUIS GRAMMAR SCHOOL

151 Newry Road, Kilkeel, County Down, BT34 4EU

T: 028 4176 2747 F: 028 4176 5694

E: info@stlouisgrammar.kilkeel.ni.sch.uk Web: www.stlouis.org.uk

Facebook: www.facebook.com/stlouisgrammarschool

Principal: Mr. Kevin Martin B.Ed., PGCE, ME.d., PQH(NI)